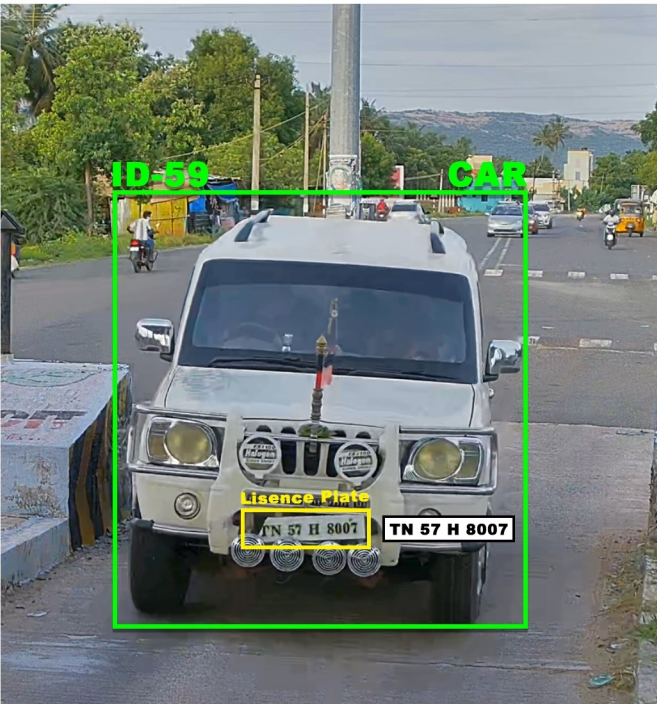


ATCC with ANPR Automatic Number Plate Recognition



TN 58 HD 3886



ATCC with ANPR Overview:

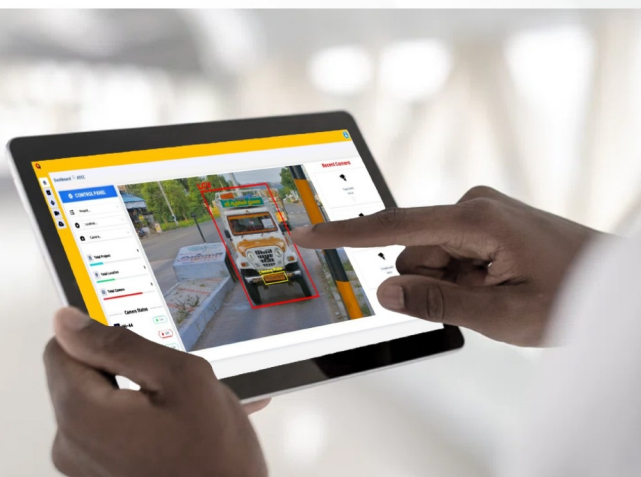
Combining Automatic Traffic Counting and Classification (ATCC) with Automatic Number Plate Recognition (ANPR) technology, proposed by NHAI, enables vehicle counting, classification, and precise number plate recognition. It streamlines tolling for highway efficiency, supports the Travel Time Measurement System (TTMS) for accurate travel time analysis, and optimizes traffic management, safety, and law enforcement, offering a holistic transport solution.

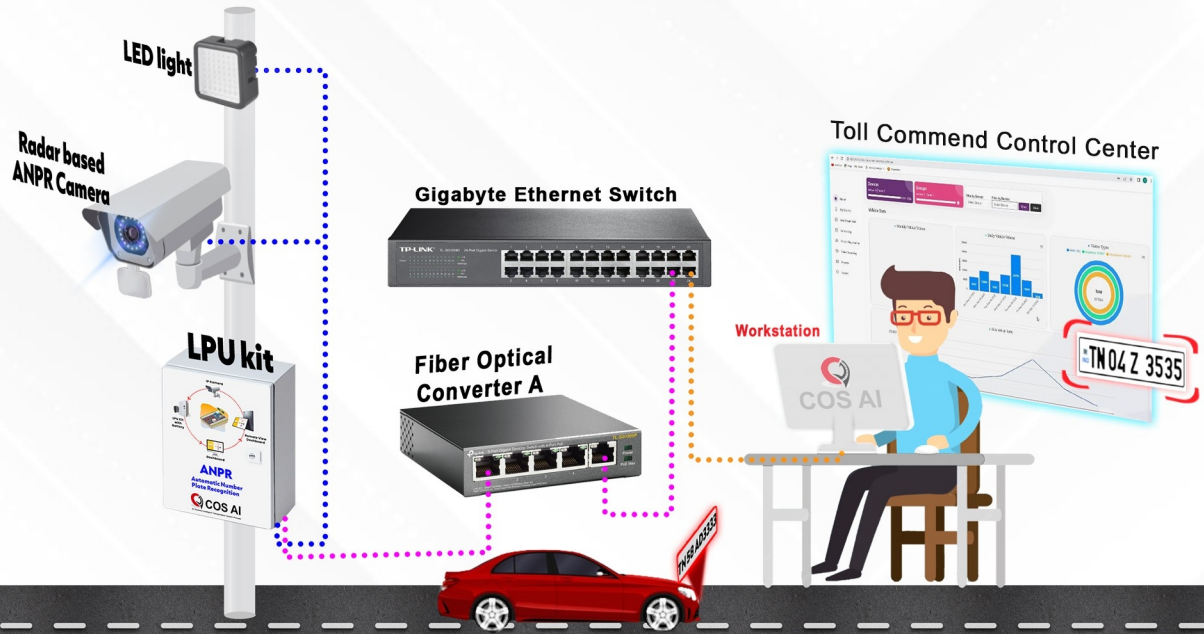
How ATCC with ANPR works?

The integrated system uses cameras, ANPR, and a GPU unit along highways to capture vehicle details, process them in real-time, and automate toll collection for congestion-free flow through toll points.

Key Features:

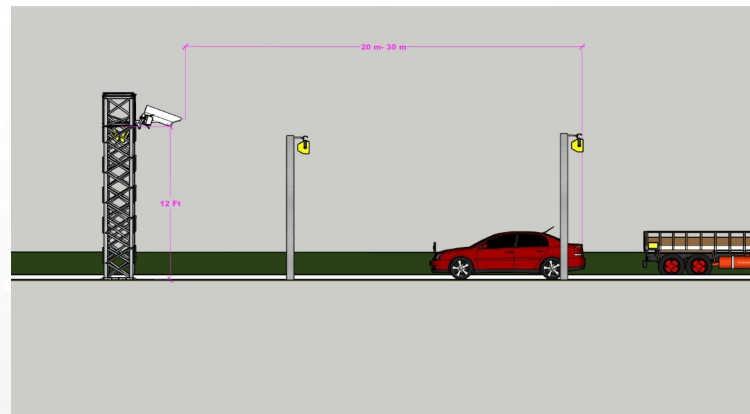
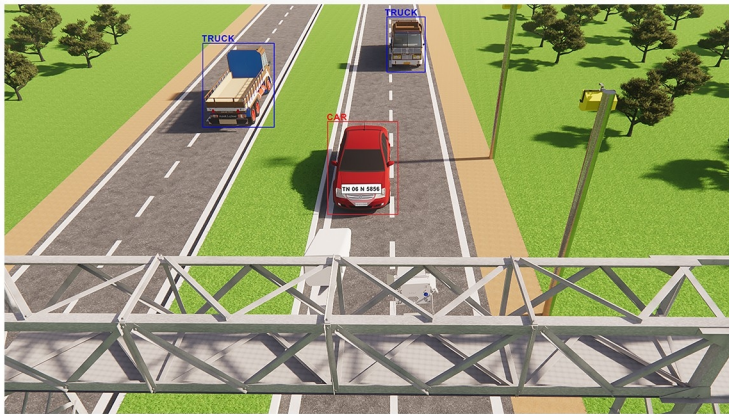
- ★ License Plate Detection
- ★ Character Segmentation
- ★ Optical Character Recognition (OCR)
- ★ Image Preprocessing
- ★ Specialized Cameras
- ★ Database Integration
- ★ Real-Time Processing
- ★ High Accuracy
- ★ Scalability
- ★ Data Storage and Retrieval
- ★ Privacy and Data Protection
- ★ Alerting and Notification
- ★ Traffic Analysis
- ★ Integration with Other Systems.





COS AI 's Indicative ANPR Components - (One location One kit for 2-lanes)

Sl.No	ANPR Components	Qty.	Unit	Cost per unit + Tax	Remarks
1	COS AI ANPR Software	1	No.	Contact	COS AI
2	Hardware of COS AI LPU Kit	1	No.	Contact	COS AI
3	ANPR Radar based Camera	1	No.	Contact	Client
4	Lighting Pole for 8.0m Pole with 1m Arm @ 5.5m / Telescopic tube / Gantry	1	No.	Contact	Client
5	PoE Switch TP Link / HIKVISION	1	No.	Contact	COS AI
6	Internet Dongle	1	No.	Contact	COS AI
7	FIBER Cable / Media Converter to connect Camera to Toll Centre Desktop	1	No.	Contact	Client
8	LED Focus Lamp 1000W / 500W as per site condition	3	Nos.	Contact	Client
9	To viewing the real time scenario - Desktop (Specs.: i5/ 8GB RAM / 512 GB SSD)	1	No.	Contact	Client



Terms & Conditions

- ★ Uninterrupted Power Supply, lighting, Internet Broadband line, Network Cabling, Camera mounting and other miscellaneous works are borne by the client.
 - ★ Camera installation must be at least 12 feet above the surface.
 - ★ Distance from the pole to the desktop fiber connectivity is required are borne by the client.
 - ★ 3 lights will be installed. There must be two poles in front of the camera pole. We need a 20 meter space between each pole. A Third light will be installed close to the camera with a road-focused beam.
 - ★ Standing vehicle should not be parked in the video coverage area. Thro-traffic only preferable.
- For TOLL Plaza, through traffic only, not advised for Service road, Road crossing, Traffic Signal, and Leakage Roads, ATCC Toll is recommendable.
- ★ If a customer requests a service road, leakage road, etc., we are unable to guarantee the accuracy of the counting and classification.

COS AI – AI Powered Intelligent Transportation System Provider

Please visit other similar ATCC products:

- ATCC Toll - Exclusively for Traffic Mangers and Toll Management.
- ATCC Movable - Exclusively for Traffic Mangers and DPR Consultant.
- AI Based Traffic Camera - Smart and economical system. Install our camera and kit, upload videos to the cloud, and share the results with the customer.
- We also provide customized AI-based services in ITS for our clients.

Please contact us or visit www.cosai.in for more information.



Head Office :

COS AI 6/13, Kamaraj Nagar 4th
Street Tallakulam, Madurai-625002

Branch Office : Bangalore, Chennai

Contact us

+91 9443063037

coscmd@gmail.com

www.cosai.in

